

SALES & SERVICE:
A Tech Authority, Inc.
13745 Stockton Ave.
Chino CA 91710
909-614-4522
sales@atechauthority.com

AxiSet™ Check-Up

About Renishaw

Renishaw is an established world leader in engineering technologies, with a strong history of innovation in product development and manufacturing. Since its formation in 1973, the company has supplied leading-edge products that increase process productivity, improve product quality and deliver cost-effective automation solutions.

A worldwide network of subsidiary companies and distributors provides exceptional service and support for its customers.

Products include:

- Dental CAD/CAM scanning and milling systems.
- Encoder systems for high accuracy linear, angle and rotary position feedback.
- Laser and ballbar systems for performance measurement and calibration of machines.
- Medical devices for neurosurgical applications.
- Probe systems and software for job set-up, tool setting and inspection on CNC machine tools.
- Raman spectroscopy systems for non-destructive material analysis.
- Sensor systems and software for measurement on CMMs (co-ordinate measuring machines).
- Stylus for CMM and machine tool probe applications.

Renishaw worldwide

Australia

T +61 3 9521 0922
E australia@renishaw.com

Austria

T +43 2236 379790
E austria@renishaw.com

Brazil

T +55 11 4195 2866
E brazil@renishaw.com

Canada

T +1 905 828 0104
E canada@renishaw.com

The People's Republic of China

T +86 21 6180 6416
E china@renishaw.com

Czech Republic

T +420 548 216 553
E czech@renishaw.com

France

T +33 1 64 61 84 84
E france@renishaw.com

Germany

T +49 7127 9810
E germany@renishaw.com

Hong Kong

T +852 2753 0638
E hongkong@renishaw.com

Hungary

T +36 23 502 183
E hungary@renishaw.com

India

T +91 80 6623 6000
E india@renishaw.com

Indonesia

T +62 21 2550 2467
E indonesia@renishaw.com

Israel

T +972 4 953 6595
E israel@renishaw.com

Italy

T +39 011 966 10 52
E italy@renishaw.com

Japan

T +81 3 5366 5316
E japan@renishaw.com

Malaysia

T +60 3 5631 4420
E malaysia@renishaw.com

The Netherlands

T +31 76 543 11 00
E benelux@renishaw.com

Poland

T +48 22 577 11 80
E poland@renishaw.com

Russia

T +7 495 231 16 77
E russia@renishaw.com

Singapore

T +65 6897 5466
E singapore@renishaw.com

Slovenia

T +386 1 527 2100
E mail@rls.si

South Korea

T +82 2 2108 2830
E southkorea@renishaw.com

Spain

T +34 93 663 34 20
E spain@renishaw.com

Sweden

T +46 8 584 90 880
E sweden@renishaw.com

Switzerland

T +41 55 415 50 60
E switzerland@renishaw.com

Taiwan

T +886 4 2473 3177
E taiwan@renishaw.com

Thailand

T +66 2 746 9811
E thailand@renishaw.com

Turkey

T +90 216 380 92 40
E turkiye@renishaw.com

UK (Head Office)

T +44 1453 524524
E uk@renishaw.com

USA

T +1 847 286 9953
E usa@renishaw.com

For all other countries

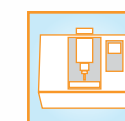
T +44 1453 524524
E international@renishaw.com



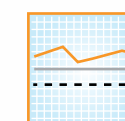
RAPID
measurement of multi-axis machine performance



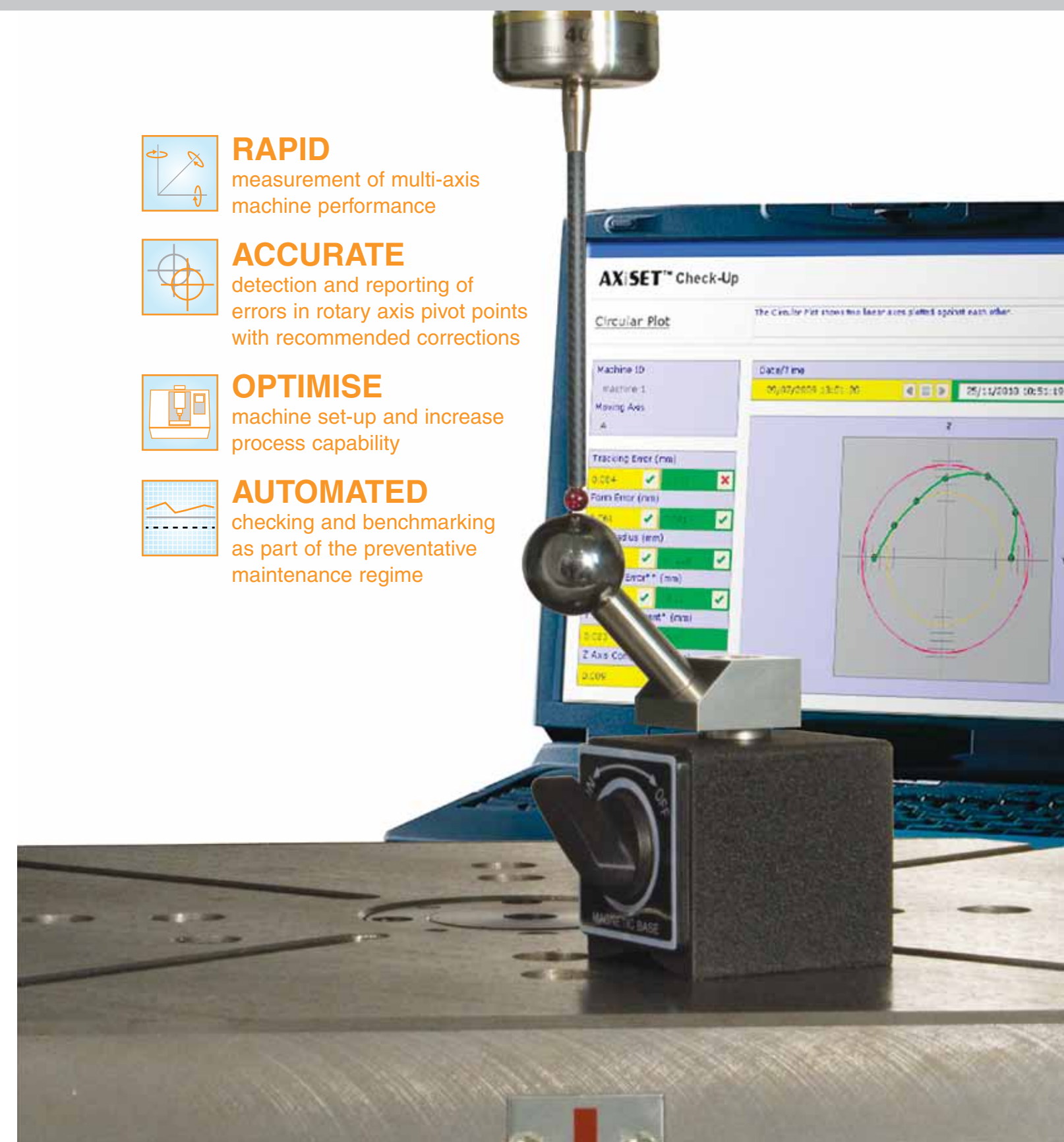
ACCURATE
detection and reporting of errors in rotary axis pivot points with recommended corrections



OPTIMISE
machine set-up and increase process capability



AUTOMATED
checking and benchmarking as part of the preventative maintenance regime



The accuracy of complex parts produced on multi-axis machines is strongly influenced by the accurate setting of the centres of rotation (pivot points) of rotary axes. Such pivot points are made use of either within machine CNCs for the Tool Cutter Point Rotation function, essential in 5-axis machining, or within CAM systems for producing angled features (3+2 axis machines).

There has been strong growth in the market for these machines but until now, no easy and reliable process for analysing the performance of their rotary axes and identifying problems caused by incorrect machine set-up, collisions or wear.

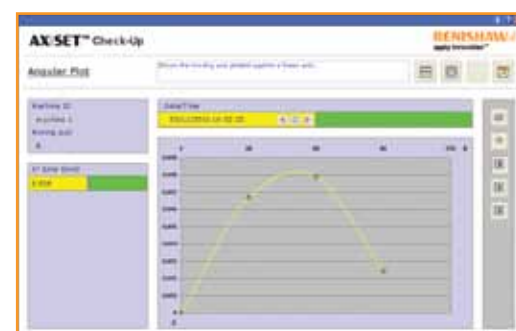
Compatible with common formats of 5-axis and multi-tasking machines, as well as other machines with rotary axes e.g. horizontal machining centres, **AxiSet™** Check-Up provides machine users with a fast and accurate health check of rotary axis pivot points. Alignment and positioning performance checks are carried out rapidly to benchmark and monitor complex machines over time.

With its probing macro software and a dedicated calibration artefact, it provides graphical representations of machine performance. PASS or FAIL decisions based on defined tolerances are provided allowing corrective actions to be made based on the reported errors. Trends in machine performance can be tracked over time using history and comparison functions. All results can be printed in a standardised report via Microsoft® Excel® and Microsoft® Word®.

The latest AxiSet™ Check-Up release 2 now offers new and improved features to extend the benefits.



Circular plot



Angular plot



History plot



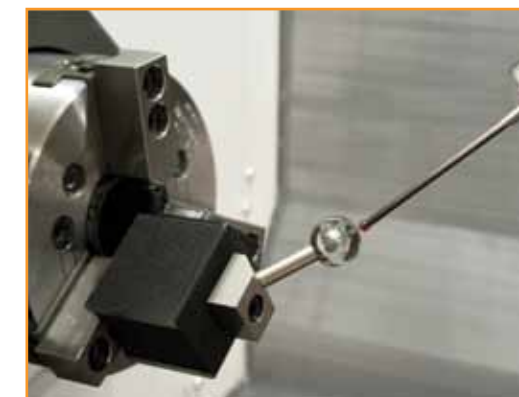
Key benefits

- Reliably check and track machine performance trends over time
- Measure and report critical errors quickly
- Provide recommended correction values for machine optimisation
- Increase confidence before critical features are machined
- Eliminate unplanned down time
- Reduce scrap and increase profits
- Enhance quality systems



New functionalities in release 2

- Discrete reporting of pivot point and lathe centre line error along linear axes (as commonly defined in CNCs)
- Incremental and absolute reporting modes
- User selectable calculation methods to establish pivot points
- Display of form error and swing radius
- Automatic import and backup of multiple data sets
- Compatibility with Microsoft® Windows 7 and Office 2010



System components

Macros

Written for a range of CNC controllers, these probing macros are machine specific and available for a range of machines with rotary axes, including 5-axis machining centres and multi-tasking mill-turn lathes. These macros drive the machine collecting measurement data.

PC software package

Running in Microsoft® Excel®, the software analyses the probe data, and displays results in various easy to read graphical formats.

Hardware

A single calibration sphere conveniently mounted on a magnetic base is used as a reference feature for measurements. This simple-to-use artefact ensures that set-up time is kept to a minimum and in most cases does not require fixtures or parts to be removed.

Recommended for use with AxiSet™ Check-Up

Strain gauge probe - For ultimate accuracy, Renishaw recommends the use of strain gauge probes. These include the latest generation of **RENGAGE™** probes as well as the widely used MP700 model.

Calibrated test bar - Ensures that **AxiSet™** measurements are traceable and comparable to the settings made by machine tool builders.

